

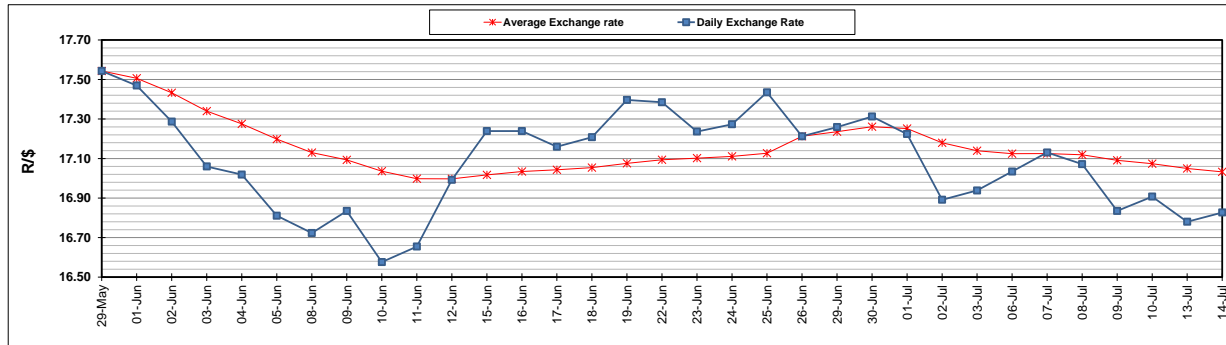
	PETROL 95 ULP	PETROL 93 ULP & LRP	DIESEL 0.05%	DIESEL 0.005%	ILL. PAR.
GAUTENG PUMP PRICE (SA c/l) AS FROM 01/07/2020	1,512.000	1,483.000	-	-	-
WHOLESALE PRICE (SA c/l) AS FROM 01/07/2020	-	-	1,303.560	1,307.960	703.828
SINGLE NATIONAL MAXIMUM RETAIL PRICE	-	-	-	-	882.000
BASIC FUEL PRICE - 14/07/2020 (SA c/l)	542.406	530.650	572.619	577.691	508.449
PRESS RELEASE CONTRIBUTION TO BFP 01/07/2020 - 14/07/2020 (SA c/l)	564.770	545.770	552.630	557.030	499.128
UNIT OVER/(UNDER) RECOVERY - 14/07/2020 (SA c/l)	22.364	15.120	(19.989)	(20.661)	(9.321)
AVERAGE BASIC FUEL PRICE 26/06/2020 - 14/07/2020	558.554	542.844	581.040	585.374	512.868
AVERAGE UNIT OVER/(UNDER) RECOVERY 26/06/2020 - 14/07/2020	(33.476)	(34.689)	(68.333)	(67.344)	(63.125)

ANALYSIS MOVEMENT OF AVERAGE OVER/(UNDER) RECOVERY

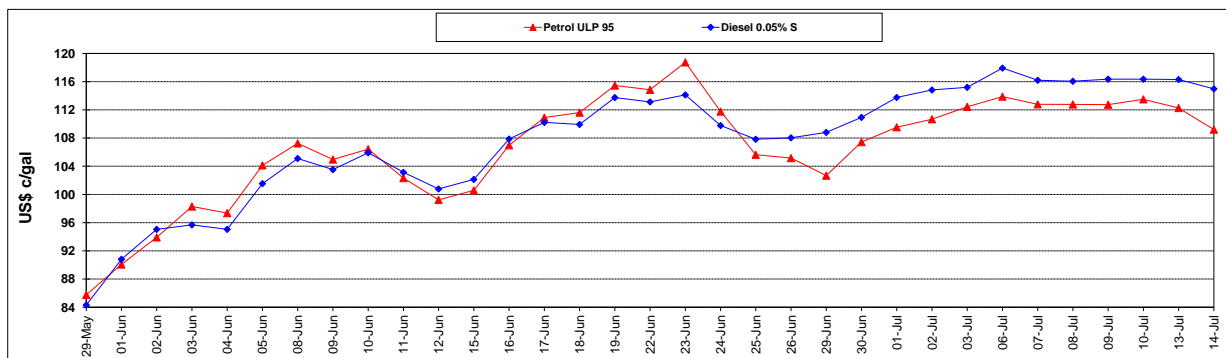
	PETROL 95	PETROL 93	DIESEL 0.05%	DIESEL 0.005%	ILL. PAR.
- MOVEMENT IN INTERNATIONAL PRODUCT PRICES	(36.578)	(37.704)	(71.560)	(70.595)	(65.974)
- MOVEMENT IN EXCHANGE RATE	3.102	3.015	3.227	3.251	2.849
AVERAGE UNIT OVER/(UNDER) RECOVERY 26/06/2020 - 14/07/2020	(33.476)	(34.689)	(68.333)	(67.344)	(63.125)

R/\$ EXCHANGE RATE - (R/\$16.8270 - 14/07/2020)

EXCHANGE RATE USED IN BASIC FUEL PRICE



INTERNATIONAL PRODUCT PRICES OF BASKET USED IN BASIC FUEL PRICE



BASIC FUEL PRICE IN SA CENTS PER LITRE

